



# CERTIFICATE OF ANALYSIS

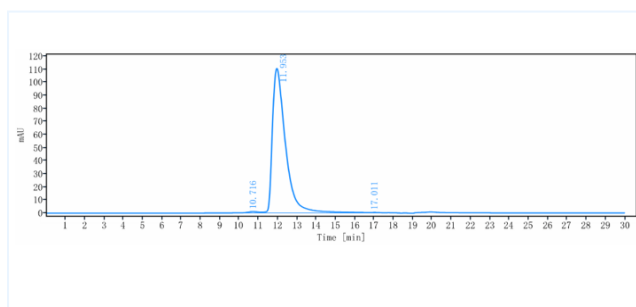


## Product Details

<b>Product name:</b>	Anti-CLDN18.2 Reference Antibody (zolbetuximab MMAE)	<b>Lot.No.:</b>	P214129D4
<b>Target Name:</b>	CLDN18.2	<b>Catalog:</b>	CHB001-2
<b>Target Accession:</b>		<b>Concentration:</b>	0.92 mg/mL
<b>Clonality:</b>		<b>Isotype:</b>	IgG
<b>Reactivity:</b>		<b>Calculated MW:</b>	150 kDa
<b>Application:</b>	HIC-HPLC, SEC-HPLC, ELISA, FACS, Functional assay	<b>Endotoxin:</b>	1.0 EU per mg
<b>Contains:</b>		<b>Conjugation:</b>	
<b>Formulation:</b>	100mM Pro-Ac 20mM ArgpH5.0	<b>Expression System:</b>	CHO
<b>Storage:</b>	For long term storage, the product should be stored at -20°C or lower.	<b>Purification:</b>	

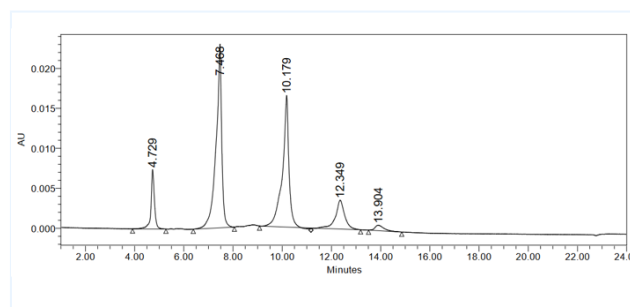
## Data

### SEC-HPLC



The purity of Anti-CLDN18.2 Reference Antibody (zolbetuximab MMAE) is 98.81% , determined by SEC-HPLC.

### HIC-HPLC



MMAE is conjugated by sulfhydryl coupling the DAR value of Anti-CLDN18.2 Reference Antibody (zolbetuximab MMAE) is 3.1.

**The products are for research use only. Not for use in diagnostic procedures.**