



# CERTIFICATE OF ANALYSIS

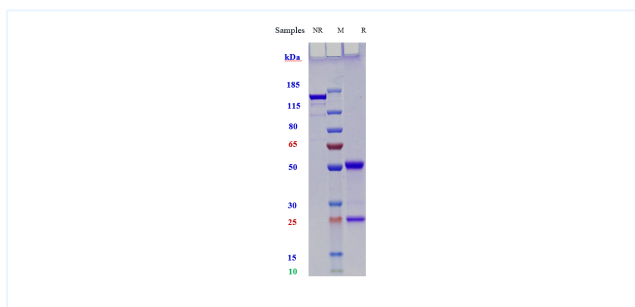


## Product Details

<b>Product name:</b>	Anti-CD3 & CD20 Reference Antibody (Epcoritamab)	<b>Lot.No.:</b>	P21098
<b>Target Name:</b>	CD3 & CD20	<b>Catalog:</b>	CHB456
<b>Target Accession:</b>	P07766 & P11836	<b>Concentration:</b>	1 mg/ml
<b>Clonality:</b>	Bispecific	<b>Isotype:</b>	IgG1
<b>Reactivity:</b>	Human, Cynomolgus [US10544220B2]	<b>Calculated MW:</b>	146.28 kDa
<b>Application:</b>	ELISA, FACS, Functional assay, Animal Model	<b>Endotoxin:</b>	<0.001 EU/ug
<b>Contains:</b>	No preservative	<b>Conjugation:</b>	Unconjugated
<b>Formulation:</b>	1 x PBS, pH 6.0	<b>Expression System:</b>	CHO
<b>Storage:</b>	-80°C for 2 years under sterile conditions -20°C for 1 year under sterile conditions Avoid repeated freeze-thaw cycles.	<b>Purification:</b>	Protein A

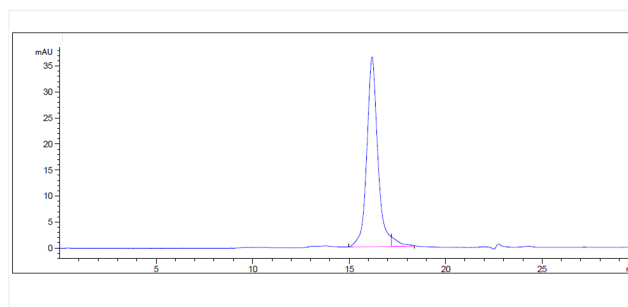
## Data

### Purity:SDS-PAGE



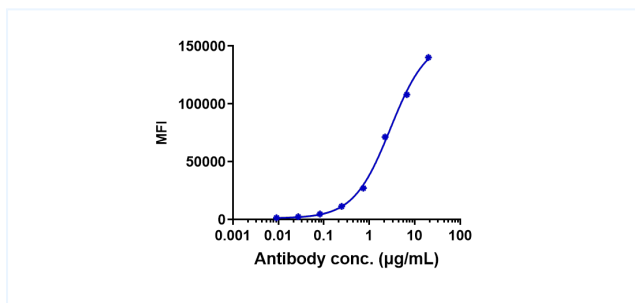
Anti-CD3 & CD20 Reference Antibody (Epcoritamab) on SDS-PAGE under reducing (R) condition. The purity of the protein is greater than 95%.

### Purity:SEC-HPLC



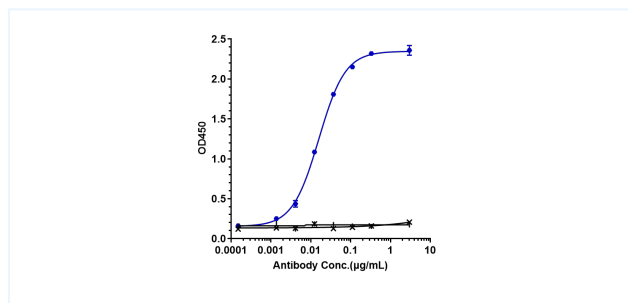
The purity of Anti-CD3 & CD20 Reference Antibody (Epcoritamab) is more than 95%, determined by SEC-HPLC.

### Bioactivity:FACS



Human CD20 CHO-K1 cells were stained with Anti-CD3 & CD20 Reference Antibody (Epcoritamab) and negative control protein respectively, washed and then followed by PE and analyzed with FACS, EC50=2.905 ug/mL.

### ELISA



Immobilized Human CD3E/CD3, His Tag at 2 ug/mL can bind Anti-CD3 & CD20 Reference Antibody (Epcoritamab), EC50=0.01596 ug/mL.

**The products are for research use only. Not for use in diagnostic procedures.**