



CERTIFICATE OF ANALYSIS

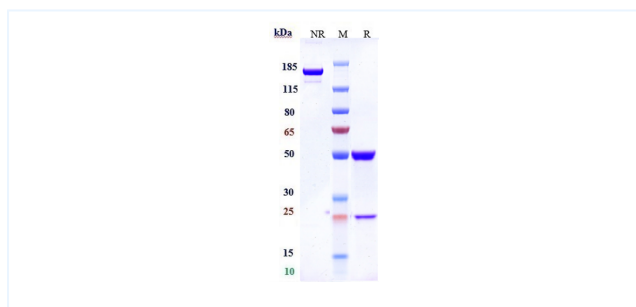


Product Details

Product name:	Anti-Siglec-2 / CD22 Reference Antibody (inotuzumab-CLM)	Lot.No.:	P87942
Target Name:	Siglec-2 / CD22	Catalog:	CHB255
Target Accession:	P20273	Concentration:	1 mg/mL
Clonality:	Monoclonal	Isotype:	IgG1
Reactivity:	Human	Calculated MW:	146.48 kDa
Application:	ELISA, Bioactivity: FACS, Functional assay, Research in vivo	Endotoxin:	<0.001 EU/ug
Contains:	No preservative	Conjugation:	Unconjugated
Formulation:	100 mM Pro-Ac 20mM Arg pH 5.0	Expression System:	CHO
Storage:	-80°C for 2 years under sterile conditions -20°C for 1 year under sterile conditions Avoid repeated freeze-thaw cycles.	Purification:	Protein A

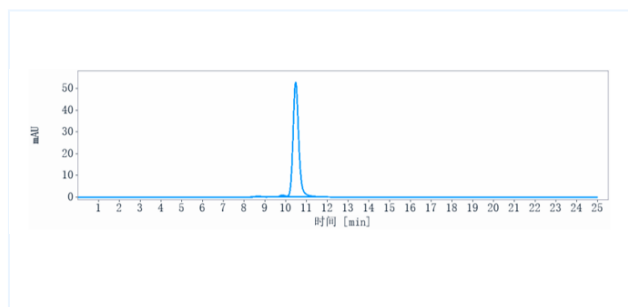
Data

Purity: SDS-PAGE



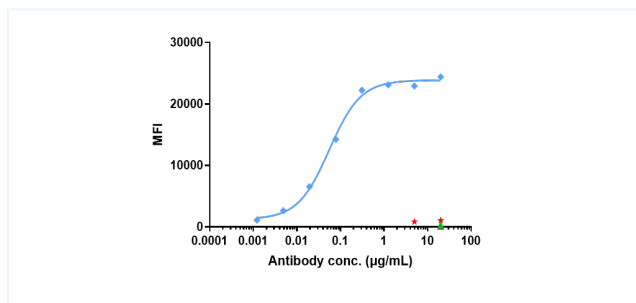
Anti-Siglec-2 / CD22 Reference Antibody (inotuzumab-CLM) on SDS-PAGE under reducing (R) condition. The purity of the protein is greater than 95%.

Purity: SEC-HPLC



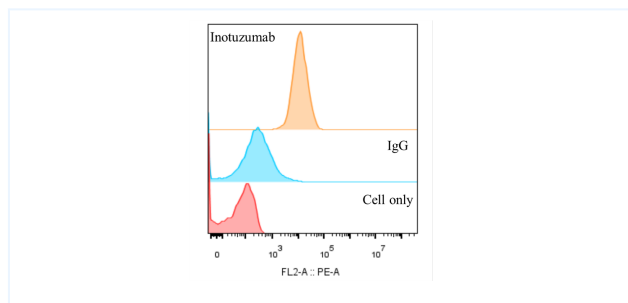
The purity of Anti-Siglec-2 / CD22 Reference Antibody (inotuzumab-CLM) is 96.81%, determined by SEC-HPLC.

Bioactivity: FACS



Daudi Cell Line were stained with Anti-Siglec-2 / CD22 Reference Antibody (inotuzumab-CLM) and negative control protein respectively, washed and then followed by PE and analyzed with FACS, The EC50 is 0.06 ug/mL.

Bioactivity: FACS



Daudi Cell Line were stained with Anti-Siglec-2 / CD22 Reference Antibody (inotuzumab-CLM) and negative control protein respectively, washed and then followed by PE and analyzed with FACS.

The products are for research use only. Not for use in diagnostic procedures.