



# CERTIFICATE OF ANALYSIS

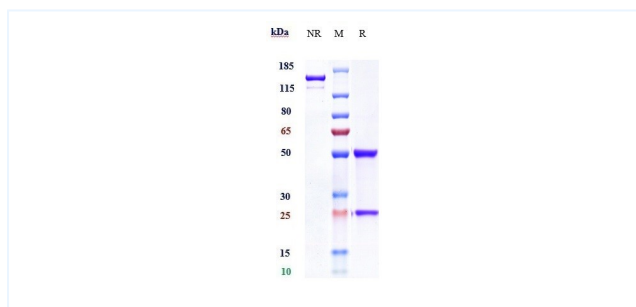


## Product Details

<b>Product name:</b>	Anti-MUC16 Reference Antibody (sofituzumab)	<b>Lot.No.:</b>	P214770
<b>Target Name:</b>	CA125 / MUC16	<b>Catalog:</b>	CHA305
<b>Target Accession:</b>	Q8WXI7	<b>Concentration:</b>	1 mg/mL
<b>Clonality:</b>	Monoclonal	<b>Isotype:</b>	IgG1
<b>Reactivity:</b>	Human, Rat, Cynomolgus	<b>Calculated MW:</b>	150 kDa
<b>Application:</b>	ELISA, Bioactivity: FACS, Functional assay, Research in vivo	<b>Endotoxin:</b>	<0.001 EU/ug
<b>Contains:</b>	No preservative	<b>Conjugation:</b>	Unconjugated
<b>Formulation:</b>	100 mM Pro-Ac 20mM Arg pH 5.0	<b>Expression System:</b>	CHO
<b>Storage:</b>	-80°C for 2 years under sterile conditions -20°C for 1 year under sterile conditions Avoid repeated freeze-thaw cycles.	<b>Purification:</b>	Protein A

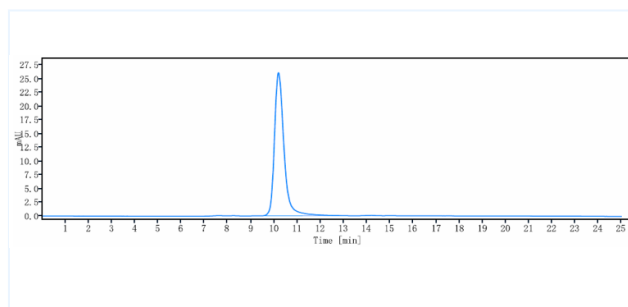
## Data

### Purity: SDS-PAGE



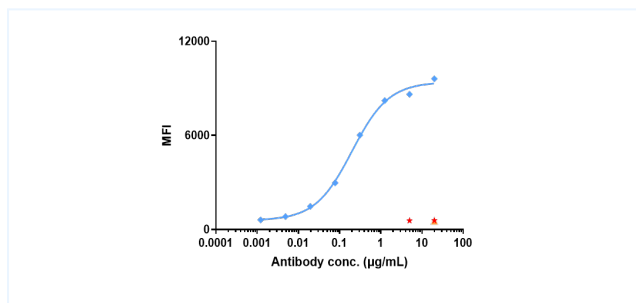
Anti-MUC16 Reference Antibody (sofituzumab) on SDS-PAGE under reducing (R) condition. The purity of the protein is greater than 95%.

### Purity: SEC-HPLC



The purity of Anti-MUC16 Reference Antibody (sofituzumab) is 100%, determined by SEC-HPLC.

### Bioactivity: FACS



HELA Cell Line were stained with Anti-MUC16 Reference Antibody (sofituzumab) and negative control protein respectively, washed and then followed by PE and analyzed with FACS. The EC50 is 0.20 ug/mL.

**The products are for research use only. Not for use in diagnostic procedures.**

Tel: +86 021 3368 1627

Email: [service@sanyoubio.com](mailto:service@sanyoubio.com)

Web: [www.crs.sanyoubio.com](http://www.crs.sanyoubio.com)