



CERTIFICATE OF ANALYSIS

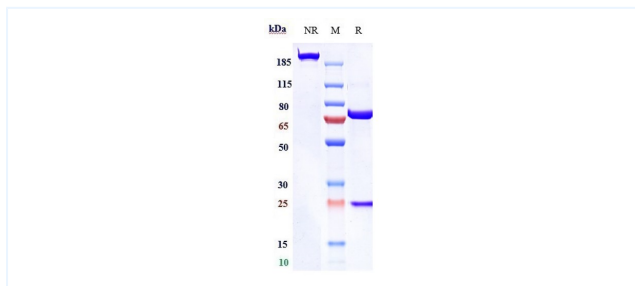


Product Details

Product name:	Anti-CD137 & Her2 Reference Antibody (Cinrebafulp alfa)	Lot. No. :	P99523
Target:	CD137 & Her2	Catalog:	CHB419
Target Accession:	Q07011 & P04626	Concentration (mg/mL) :	1 mg/mL
Clonality:	Monoclonal	Isotype:	IgG4
Reactivity:	Human	Molecular Weight (kDa) :	187.86 kDa
Application:	Kinetics (SPR), ELISA, Bioactivity: FACS, Functional assay, Research in vivo	Endotoxin:	<1 EU/mg
Formulation:	Liquid: 100mM Pro-Ac, 20mM Arg pH 5.0 Lyophilization: 25mM histidine, 8% sucrose, 0.01% Tween80 pH6.2	Conjugation:	Unconjugated
Reconstitution:	For Powder, reconstitute with sterile, distilled water to a final concentration of 1 mg/mL. Gently shake to solubilize completely. Do not vortex.	Expression System:	CHO
Storage:	Upon receipt, store immediately at -20°C or lower for 24 months. Store aliquots at -80° C for up to 3 months. Avoid repeated freeze-thaw cycles.	Purification:	Protein A

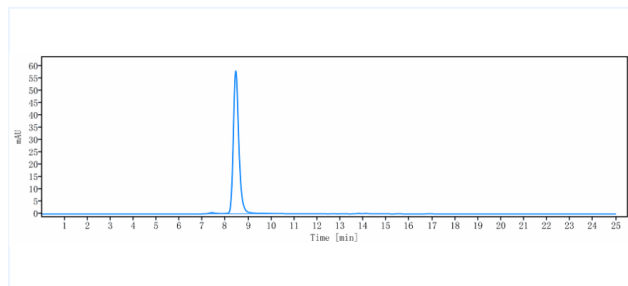
Data

Purity: SDS-PAGE



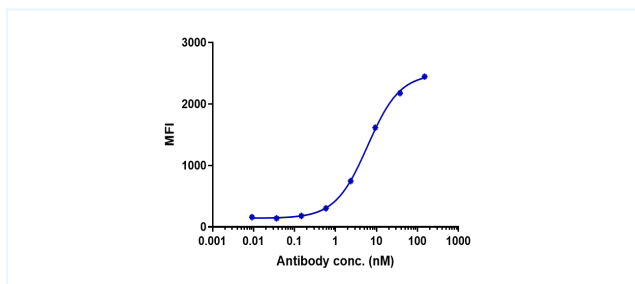
Anti-CD137 & Her2 Reference Antibody (Cinrebafulp alfa) on SDS-PAGE under reducing (R) condition. The purity of the protein is greater than 95%.

Purity: SEC-HPLC



The purity of Anti-CD137 & Her2 Reference Antibody (Cinrebafulp alfa) is 98.33%, determined by SEC-HPLC.

Bioactivity: FACS



Human 4-1BB NF- κ B Jurkat cells were stained with Anti-CD137 & Her2 Reference Antibody (Cinrebafusp alfa) and negative control protein respectively, washed and then followed by PE and analyzed with FACS, EC50=6.065 nM.

The products are for research use only. Not for use in diagnostic procedures.

Tel: +86 021 3368 1627

Email: service@sanyoubio.com

Web: www.crs.sanyoubio.com