



# CERTIFICATE OF ANALYSIS

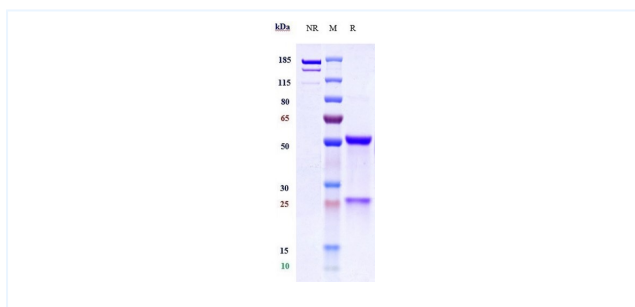


## Product Details

<b>Product name:</b>	Anti-EGFR & Fc-gamma-RIIIA Reference Antibody (AFM24)	<b>Lot.No.:</b>	P01328
<b>Target Name:</b>	EGFR & Fc-gamma-RIIIA	<b>Catalog:</b>	CHB480
<b>Target Accession:</b>	P00533 & P08637	<b>Concentration:</b>	1 mg/ml
<b>Clonality:</b>	Monoclonal	<b>Isotype:</b>	IgG1
<b>Reactivity:</b>	Human, Mouse, Cynomolgus [WO2019175368 ]	<b>Calculated MW:</b>	74.5 kDa
<b>Application:</b>	ELISA, FACS, Functional assay, Animal Model	<b>Endotoxin:</b>	<0.001 EU/ug
<b>Contains:</b>	No preservative	<b>Conjugation:</b>	Unconjugated
<b>Formulation:</b>	1 x PBS, pH 6.0	<b>Expression System:</b>	CHO
<b>Storage:</b>	-80°C for 2 years under sterile conditions -20°C for 1 year under sterile conditions Avoid repeated freeze-thaw cycles.	<b>Purification:</b>	Protein A

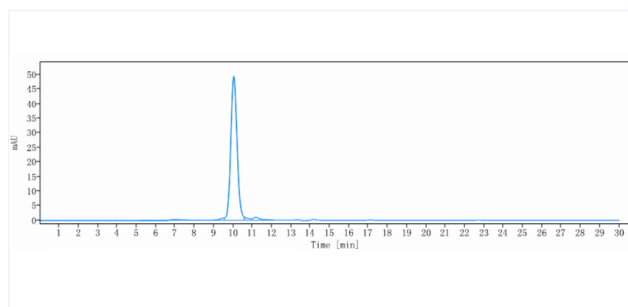
## Data

### Purity:SDS-PAGE



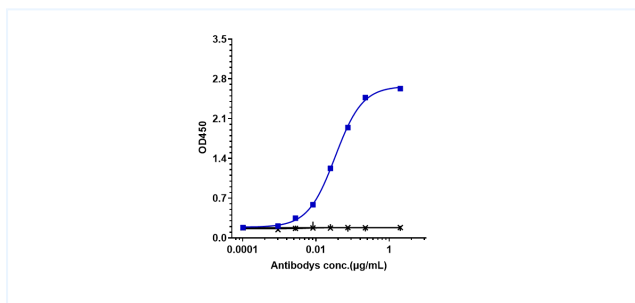
Anti-EGFR & Fc-gamma-RIIIA Reference Antibody (AFM24) on SDS-PAGE under reducing (R) condition. The purity of the protein is greater than 99.5%.

### Purity:SEC-HPLC



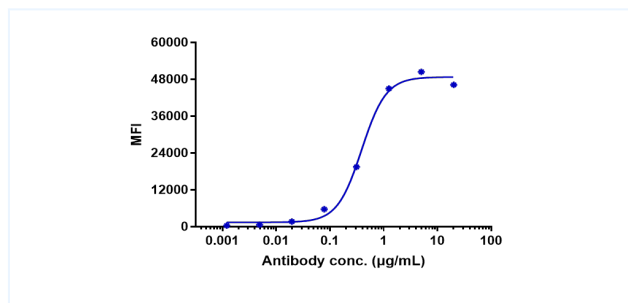
The purity of Anti-EGFR & Fc-gamma-RIIIA Reference Antibody (AFM24) is 94.36%, determined by SEC-HPLC.

### Bioactivity:ELISA



Immobilized human EGFRHis at 2 µg/mL can bind Anti-EGFR & Fc-gamma-RIIIA Reference Antibody (AFM24), EC50=0.03329 µg/mL.

### Bioactivity:FACS



Human EGFR CHO-K cells were stained with Anti-EGFR & Fc-gamma-RIIIA Reference Antibody (AFM24) and negative control protein respectively, washed and then followed by PE and analyzed with FACS, EC50=0.3888 µg/mL.

**The products are for research use only. Not for use in diagnostic procedures.**