



# CERTIFICATE OF ANALYSIS

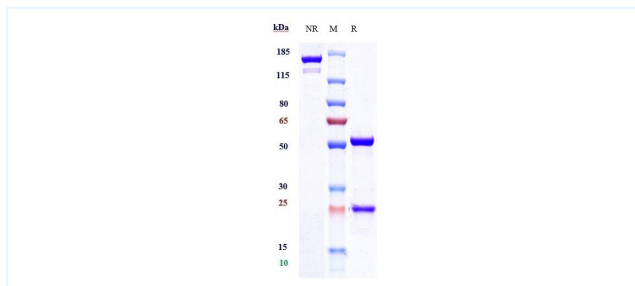


## Product Details

<b>Product name:</b>	Anti-CD3 & EpCAM Reference Antibody (Catumaxomab(mIgG2a-rat IgG2b))	<b>Lot. No. :</b>	P220173
<b>Target:</b>	CD3 & EpCAM	<b>Catalog:</b>	CHB468
<b>Target Accession:</b>	P07766 & P16422	<b>Concentration(mg/mL) :</b>	1 mg/mL
<b>Clonality:</b>	Monoclonal	<b>Isotype:</b>	mIgG2
<b>Reactivity:</b>	Human, Mouse	<b>Molecular Weight (kDa) :</b>	146.73 kDa
<b>Application:</b>	Kinetics (SPR), ELISA, Bioactivity: FACS, Functional assay, Research in vivo	<b>Endotoxin:</b>	<1 EU/mg
<b>Formulation:</b>	Liquid: 100mM Pro-Ac, 20mM Arg pH 5.0 Lyophilization: 25mM histidine, 8% sucrose, 0.01% Tween80 pH6.2	<b>Conjugation:</b>	Unconjugated
<b>Reconstitution:</b>	For Powder, reconstitute with sterile, distilled water to a final concentration of 1 mg/mL. Gently shake to solubilize completely. Do not vortex.	<b>Expression System:</b>	CHO
<b>Storage:</b>	Upon receipt, store immediately at -20°C or lower for 24 months. Store aliquots at -80° C for up to 3 months. Avoid repeated freeze-thaw cycles.	<b>Purification:</b>	Protein A

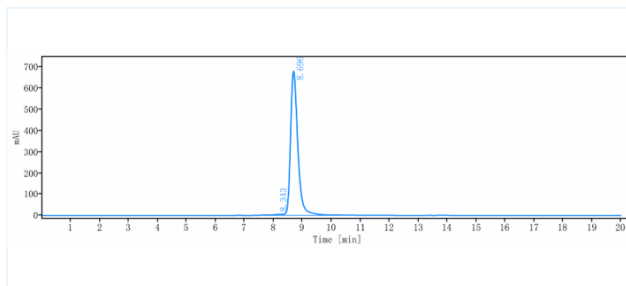
## Data

### Purity: SDS-PAGE



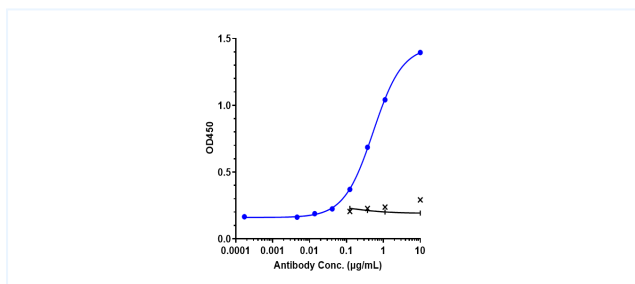
Anti-CD3 & EpCAM Reference Antibody (Catumaxomab(mIgG2a-rat IgG2b)) on SDS-PAGE under reducing (R) condition. The purity of the protein is greater than 95%.

### Purity: SEC-HPLC



The purity of Anti-CD3 & EpCAM Reference Antibody (Catumaxomab(mIgG2a-rat IgG2b) ) is 98.56%, determined by SEC-HPLC.

### Bioactivity: ELISA



Immobilized Recombinant human CD3D & CD3E at 4 ug/mL can bind  
Catumaxomab, EC50=0.5298 ug/mL.

**The products are for research use only. Not for use in diagnostic procedures.**

Tel: +86 021 3368 1627

Email: [service@sanyoubio.com](mailto:service@sanyoubio.com)

Web: [www.crs.sanyoubio.com](http://www.crs.sanyoubio.com)