



# CERTIFICATE OF ANALYSIS

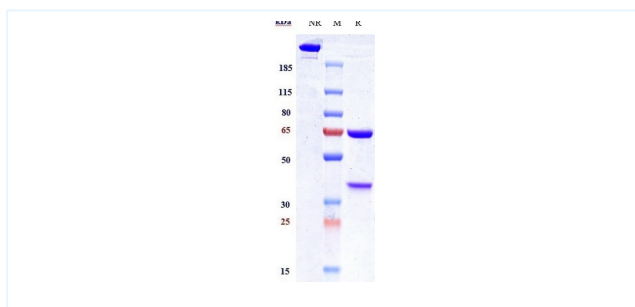


## Product Details

<b>Product name:</b>	Anti-IL-1a & IL1b Reference Antibody (Lutikizumab)	<b>Lot.No.:</b>	P106489
<b>Target Name:</b>	IL-1a & IL1b	<b>Catalog:</b>	CHB431
<b>Target Accession:</b>	P01583 & P01584	<b>Concentration:</b>	1 mg/ml
<b>Clonality:</b>	Monoclonal	<b>Isotype:</b>	IgG1
<b>Reactivity:</b>	Human, Mouse, Cynomolgus [WO2011143562A2]	<b>Calculated MW:</b>	196.8 kDa
<b>Application:</b>	ELISA, FACS, Functional assay, Animal Model	<b>Endotoxin:</b>	<0.001 EU/ug
<b>Contains:</b>	No preservative	<b>Conjugation:</b>	Unconjugated
<b>Formulation:</b>	1 x PBS, pH 6.0	<b>Expression System:</b>	CHO
<b>Storage:</b>	-80°C for 2 years under sterile conditions -20°C for 1 year under sterile conditions Avoid repeated freeze-thaw cycles.	<b>Purification:</b>	Protein A

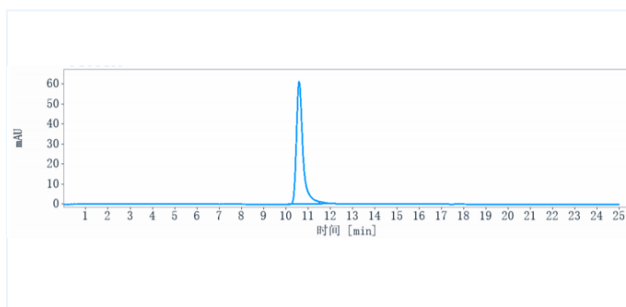
## Data

### Purity:SDS-PAGE



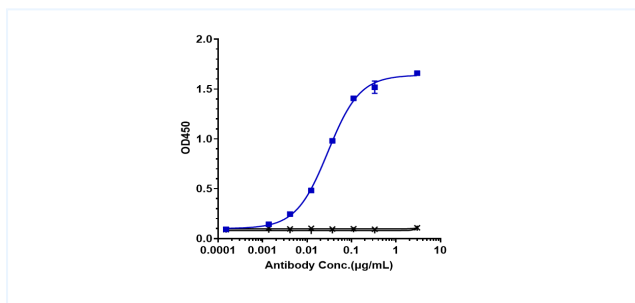
Anti-IL-1a & IL1b Reference Antibody (Lutikizumab) on SDS-PAGE under reducing (R) condition. The purity of the protein is greater than 95%.

### Purity:SEC-HPLC



The purity of Anti-IL-1a & IL1b Reference Antibody (Lutikizumab) is 98.44%, determined by SEC-HPLC.

### Bioactivity:ELISA



Immobilized human IL 1a, Fc at 2 ug/mL can bind Anti-IL-1a & IL1b Reference Antibody (Lutikizumab), EC50=0.0294 ug/mL.

**The products are for research use only. Not for use in diagnostic procedures.**