



CERTIFICATE OF ANALYSIS

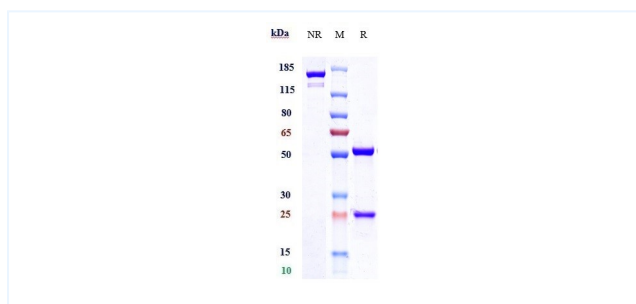


Product Details

Product name:	Anti-CD3 & EpCAM Reference Antibody (Catumaxomab(huIgG1-rat IgG2b))	Lot.No.:	P220173
Target Name:	CD3 & EpCAM	Catalog:	CHB469
Target Accession:	P07766 & P16422	Concentration:	1 mg/ml
Clonality:	Monoclonal	Isotype:	mIgG2
Reactivity:	Human, Mouse [US9750806]	Calculated MW:	146.73 kDa
Application:	ELISA, FACS, Functional assay, Animal Model	Endotoxin:	<0.001 EU/ug
Contains:	No preservative	Conjugation:	Unconjugated
Formulation:	1 x PBS, pH 6.0	Expression System:	CHO
Storage:	-80°C for 2 years under sterile conditions -20°C for 1 year under sterile conditions. Avoid repeated freeze-thaw cycles.	Purification:	Protein A

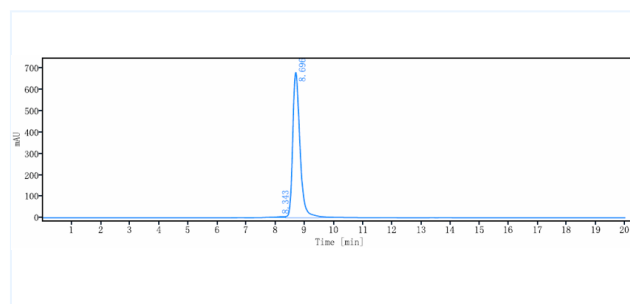
Data

Purity:SDS-PAGE



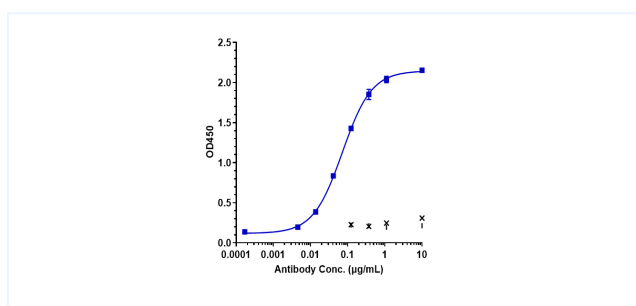
Anti-CD3 & EpCAM Reference Antibody (Catumaxomab(huIgG1-rat IgG2b)) on SDS-PAGE under reducing (R) condition. The purity of the protein is greater than 95%.

Purity:SEC-HPLC



The purity of Anti-CD3 & EpCAM Reference Antibody (Catumaxomab(huIgG1-rat IgG2b)) is 98.56%, determined by SEC-HPLC.

Bioactivity:ELISA



Immobilized human EPCAM His at 4 ug/mL can bind Anti-CD3 & EpCAM Reference Antibody (Catumaxomab (huIgG1-rat IgG2b)), EC50=0.0723 ug/mL.

The products are for research use only. Not for use in diagnostic procedures.

Tel: +86 021 3368 1627

Email: service@sanyoubio.com

Web: www.crs.sanyoubio.com